



View from Grabnergasse

Pictures © RATAPLAN

# RATAPLAN

## Office Building - Reconstruction of the Facade and vertical Garden

Vienna Water MA31, Grabnergasse 4, A-1060 Vienna

client  
design

**MA 31 Vienna Water**  
**RATAPLAN - Architektur ZT**  
**GmbH**  
**Gunda Maurer**  
**University of Natural Resources**  
**and Life Sciences**  
**GB-Consult**  
**Schöberl u. Pöll**  
**2014**  
**2016**

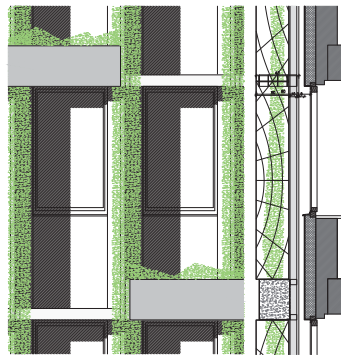
in collaboration  
vegetation

structural engineer  
technical engineer  
start of planning  
completed

It is a radical, high vertically structured south / west façade from the 1960's that was thermally renovated with a new „green“ facade combining function with structure.

### Architecture

The vertical structure of the building is from the 1960s and was taken in consideration of the Task. The rhythm of the reliefs of pilasters, parapets and window levels remain largely intact and are strengthened by steel supports and trellises. Staggered planters over two window axis produce a new pattern in conjunction with the existing vertical structure. Depending on your location and viewing angle, the visibility of the original plaster facade changes. From vis à vis you will see more of the rhythm of the



Detail of the Facade, Construction



View from the „Wienzeile“



Facade, Springtime



Facade, Wintertime



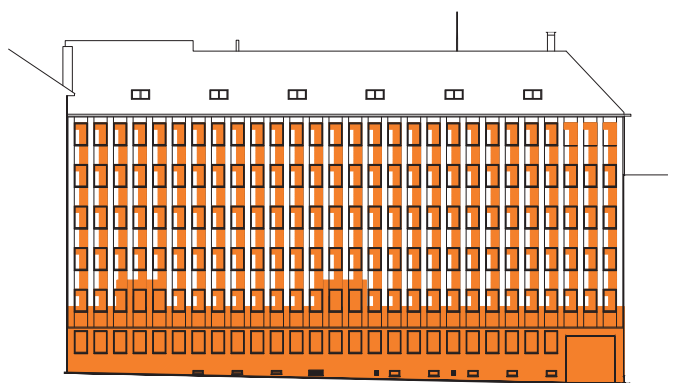
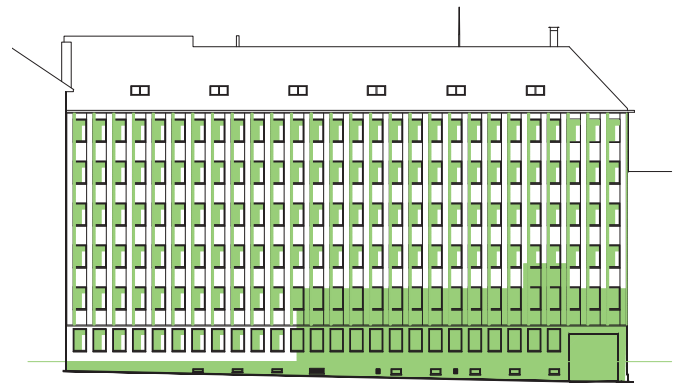
Frontal view Grabnergasse

Picture © Anna Stöcher

60's façade but by changing the angle of view, especially from a distance, condenses the added garden structure to a dense green wall, obscuring the underlying plaster façade.

### Construction

The calculation provided by the civil engineer indicated that it was not possible to add any load to the existing structure of the façade. However, it was possible to build the new carrying structure on it's own foundation directly in front of the building. On the hollow rectangular supporting columns, planters were directly attached, which helped to stiffen and strengthen the supporting structure, as well as provide a large container for plants and provide shade from above. The large planting area also makes it possible for vines and other climbing plants to grow larger on the trellises from floor to floors and heights beyond. These vegetated trellises produce lateral shade during the vegetation period of spring and summer. The addition of evergreen vines produces lateral shade even in winter, although to a lesser extent. The division of the trellises are so formulated that they create the best support for the plants as well as a visually appealing facade. The planters are offset with fixed sunblinds and result in a changing constellation with an extensive overall pattern beginning at the Facade above the ground floor.



„Cool Shadow“ on the Facade